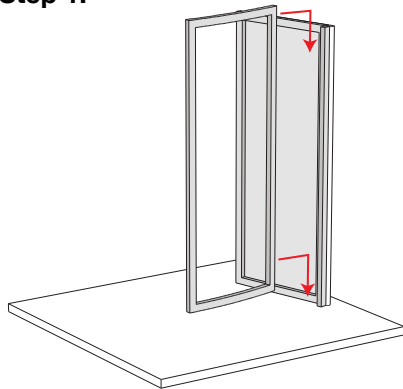
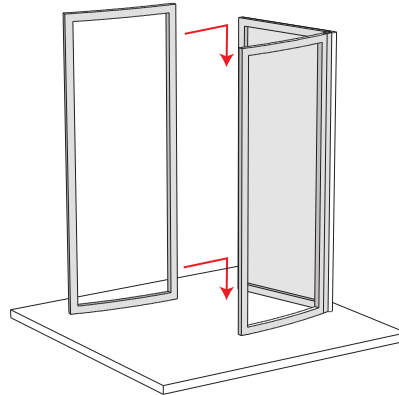


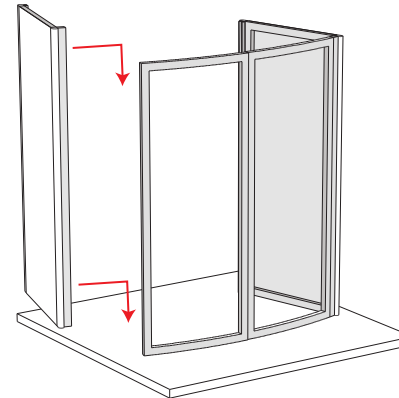
Step 1.



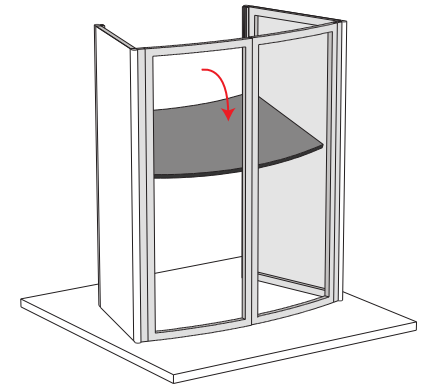
Step 2.



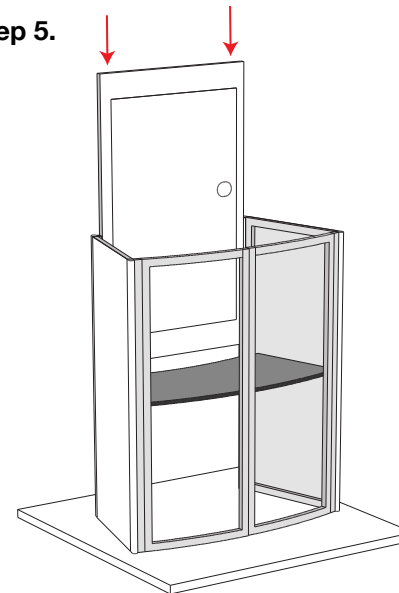
Step 3.



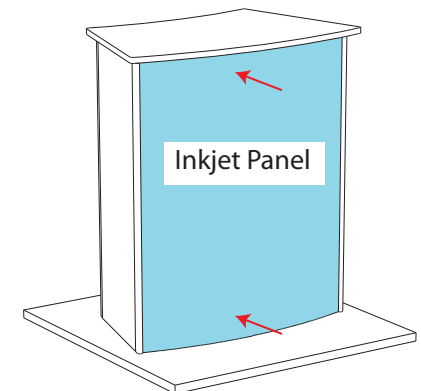
Step 4.



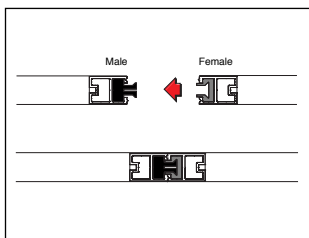
Step 5.



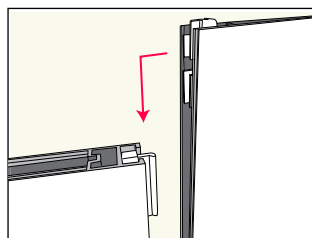
Step 6.



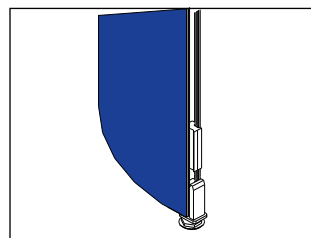
General Assembly



All panels have male and female connectors. The male connector should always be on your right when facing the front of the display.



Align the panels and slide the female connectors down over the male connectors.



The base level has adjustable feet that allow you to level the display on an uneven floor. You should assemble the entire base level before adjusting feet..