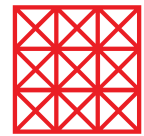
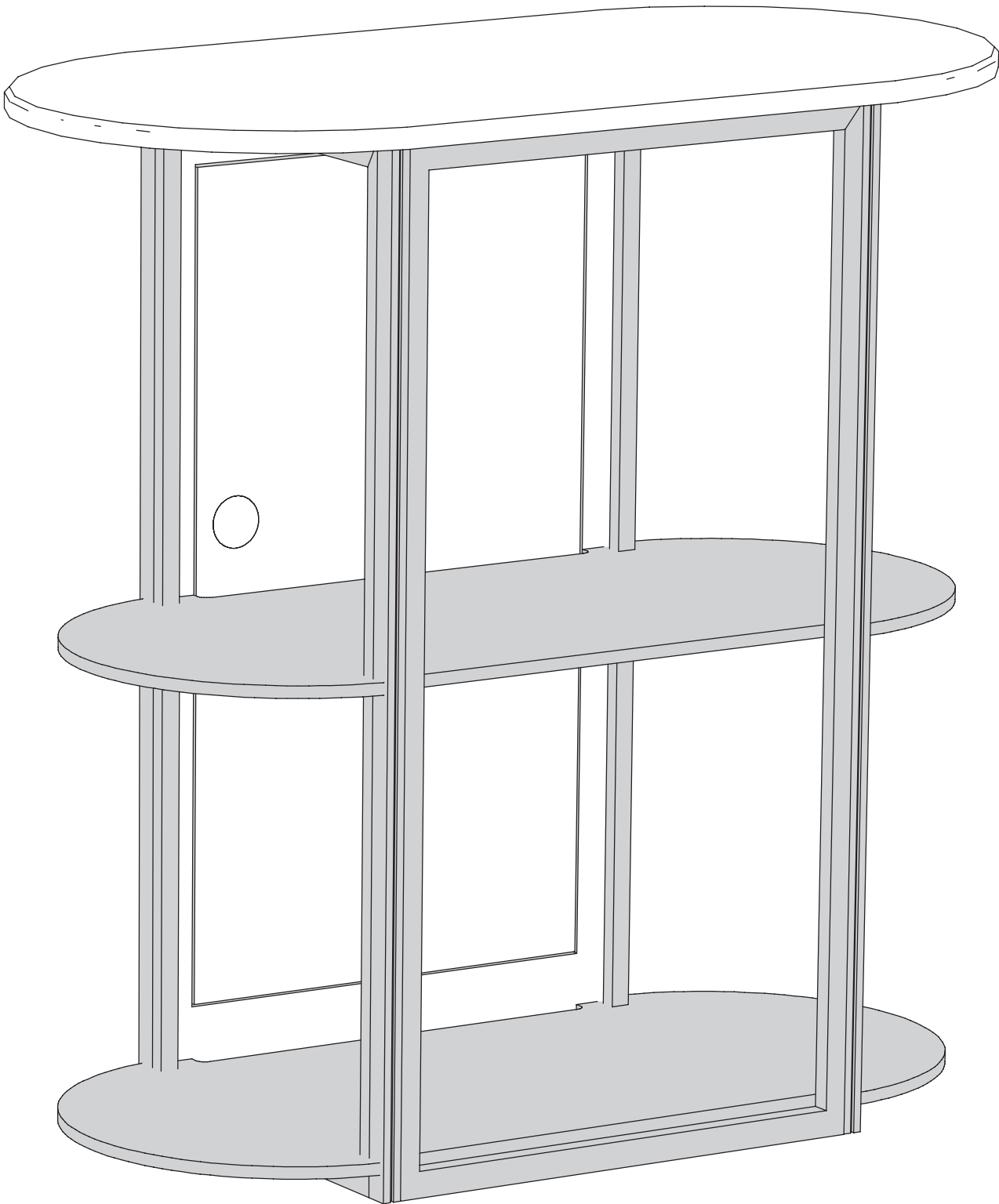


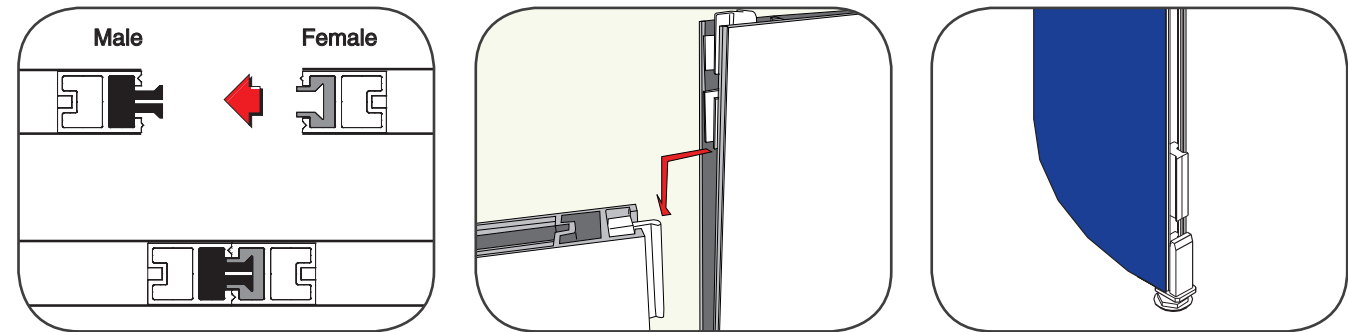
Nomadic  **Display**[®]
World class modular and portable exhibits

Assembly Steps

- Step .1** - Read the general assembly instructions below to understand the basic assembly of the stand.
- Step .2** - Locate component **A1** in the packing cases and begin assembly from the starting point. Each of the components are individually numbered and has a drawing that explains it's location and installation.
- Step .3** - Follow the numbering sequence to complete each section of the counter.



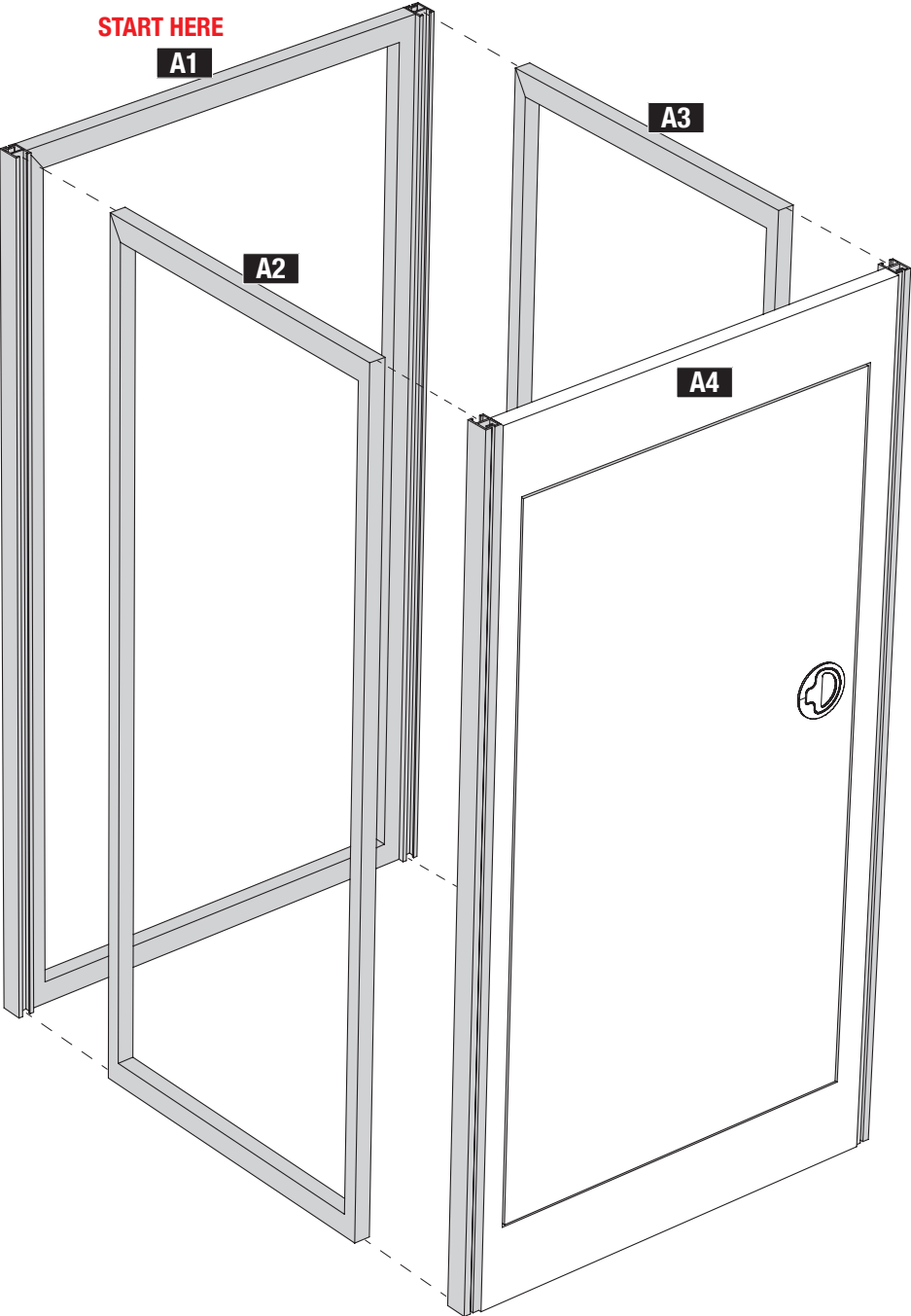
Platinum General Assembly Instructions



All panels have male and female connectors. The male connector should always be on your right when facing the front of the display.

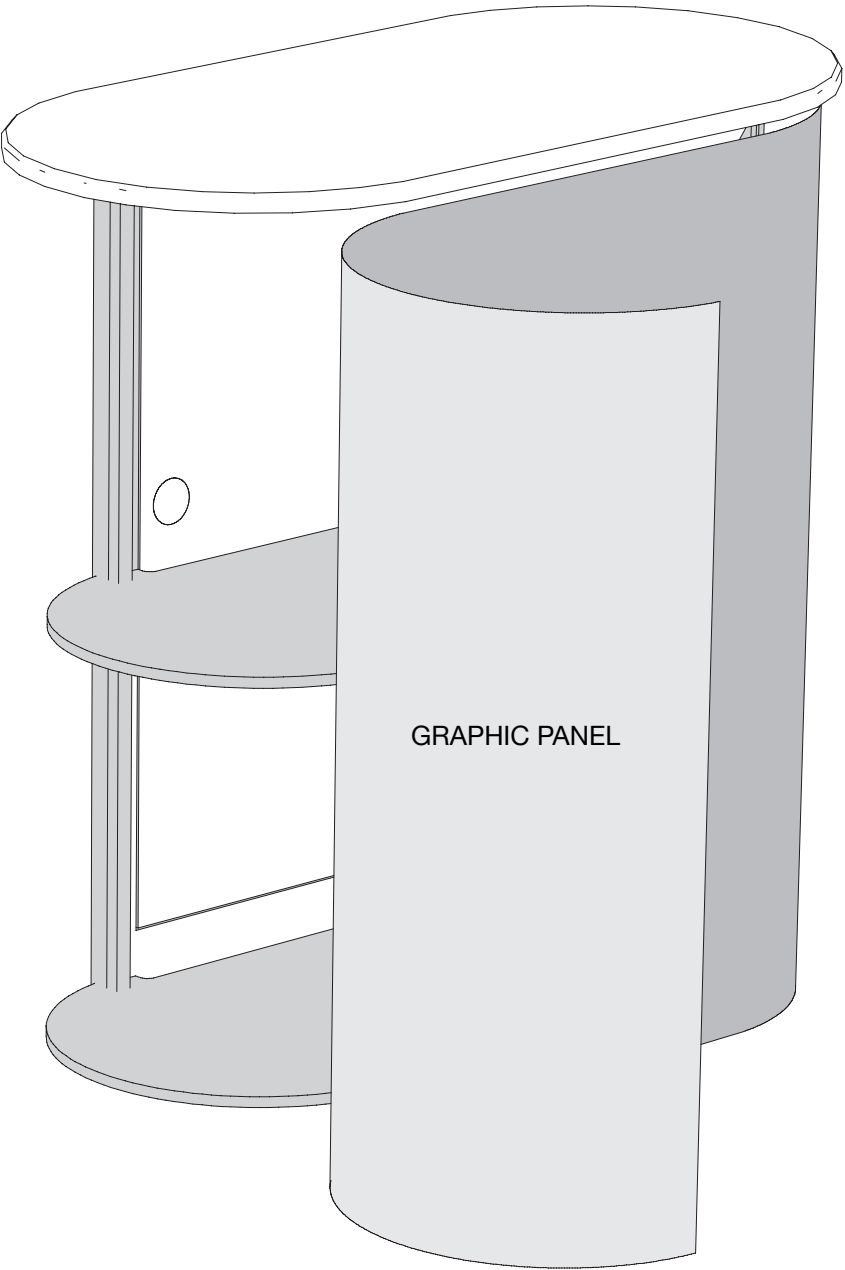
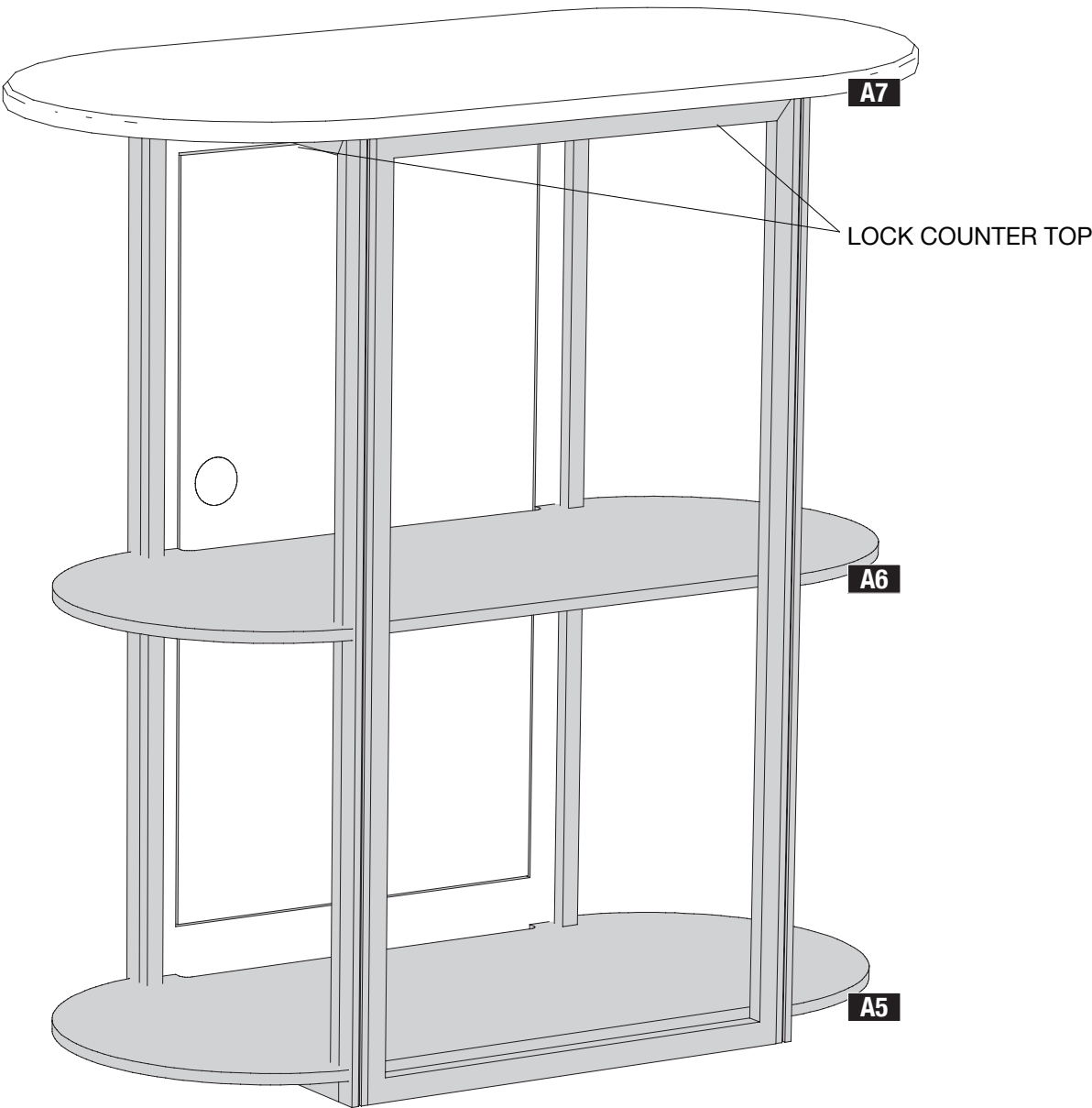
Align the panels and slide the female connectors down over the male connectors.

The base level has adjustable feet that allow you to level the display on an uneven floor. You should assemble the entire base level before adjusting feet.



Assembly Notes

Step .1 Align the panels and slide the female connectors down over the male connectors.



Assembly Notes

- Step .2** Fit internal shelves A5 and A6 into the counter frame.
- Step .3** Fit counter top A7 and lock to panels on both sides.
- Step .4** Wrap graphic panel around the counter frame.